

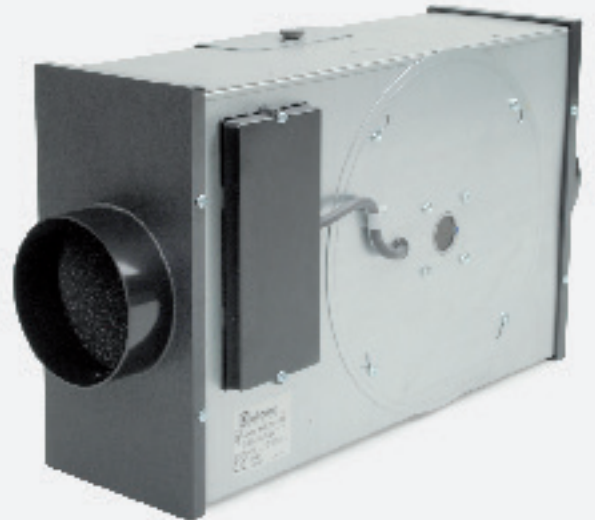
E-Box Micro

expella™

Silent and compact inline exhaust fan

2MB0520 | 2MB0651

The E-box Micro fan is designed for inline (ducted) installation. This fan's compact design makes it ideal to install in tight spaces and it is suitable for single or multiple rooms in domestic and commercial applications. The centrifugal motor guarantees higher air flow while the acoustic internal lining results in silent operation. This fan may be run continuously and functions well with long lengths of ducting.



Manufacturer:



Warranty:

2 years

Applications and Installation:

- To be used in conjunction with internal grilles, and ducting (not included)
- Works with long ducting lengths (up to 20m)*
- Suitable for single or multiple room domestic and commercial applications including:
 - Bathrooms
 - Kitchens and laundries
 - Bedrooms
 - Theatre rooms
 - Offices
- It is recommended that this product be installed by an industry professional (electrician or air-conditioning installer)

* Correctly sized ducting

Options:

Built-in run on timer

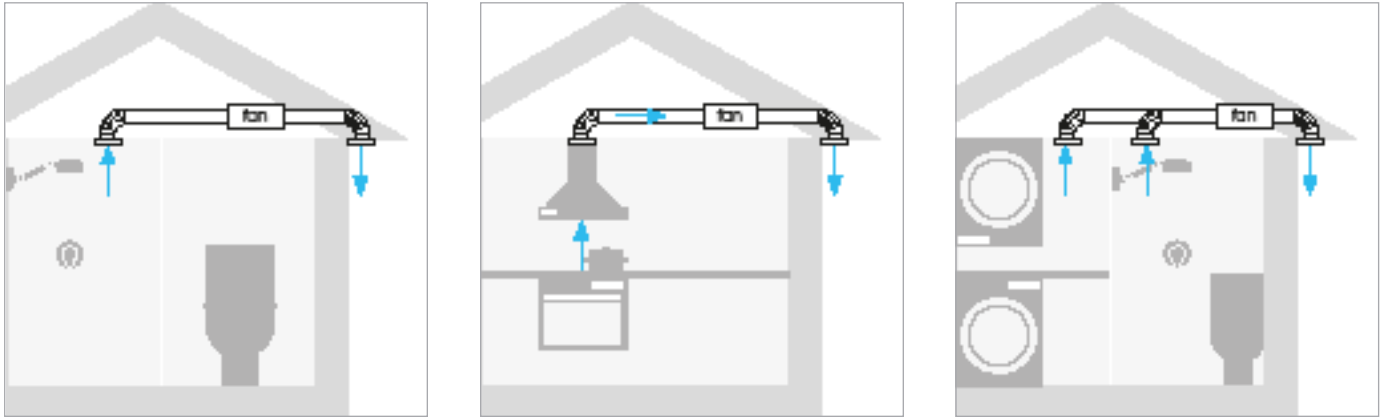
Features and Benefits

- Compact and versatile
- Silent operation
- User friendly
- Robust galvanised steel casing
- Backward curved blades to ensure lowest sound levels and develop ample static pressure
- Swing out motor and impeller for ease of cleaning and maintenance
- Can be used with long lengths of rigid or flexible ducting
- Ideal solution for centralised / multi-point ventilation systems
- Variable speed controllable
- Ball bearing motor, permanently lubricated for maintenance free operation and continuous running
- European made

E-Box Micro

Silent and compact inline exhaust fan

Applications:



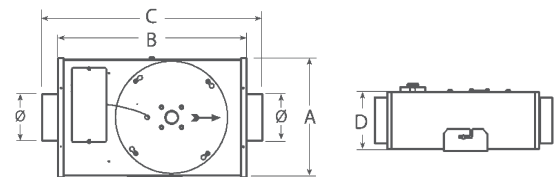
Specifications:

Model	Item Code	Volume m ³ /h (maximum)	Volume L/s (maximum)	Pressure (maximum)	Wattage	Noise dB(A)*	RPM
Ebox Micro 100	2MB0520	172	48	302	60	34.4	1960
Ebox Micro 125	2MB0651	208	58	310	61	36.9	1890

* Measured at 3 metres

Dimensions:

Model	A	B	C	D	Ø
Ebox Micro 100	241	384	448	135	100
Ebox Micro 125	241	384	448	135	125



Performance:

