

Standard Exhaust Kit

expella™

High performance inline ventilation kit

1406530

The Standard Exhaust Kit by Expella contains all of the components needed for an effective single point inline ventilation system. Combine this kit with your preferred internal ceiling grille from Expella's designer range.



Manufacturer:

expella™

Warranty:

2 years

Benefits:

- An all-in-one ventilation kit that is suitable for single point ventilation systems
- Pair this kit with any of the products in Expella's internal ceiling grille range (internal grilles are not included)
- Kit contains a high performance inline fan capable of exhausting 530m³/hr (free air)
- Fan comes with an external high and low speed switch on the fan
- Low running costs due to the low wattage fan (just 44 watts on low speed)
- Fan is fitted with a 3 pin plug making the kit DIY friendly

Kit Contents:

- 1x EMF150 inline exhaust fan
- 1x 150mm non return damper
- 1x 6 metre length flexible duct
- 1x 150mm plastic half chevron external grille
- 4m aluminium silver tape
- 4x cable ties

Compliance:

Complies with the following requirements in the National Construction Code (2022) and Australian Standards

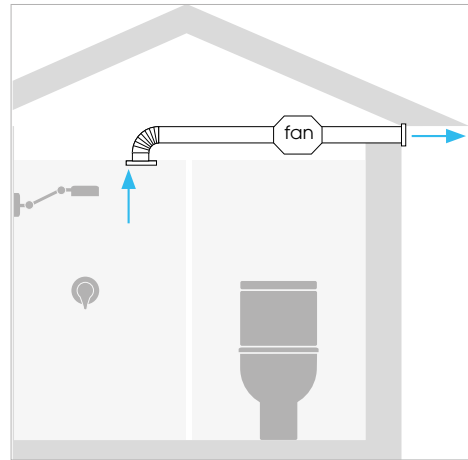
- F6 (light and ventilation)
- F8 (condensation management)
- J5 (building sealing)
- J6 (air conditioning and ventilation)
- AS1668.2
- AS4254.1 (flexible duct)

Standard Exhaust Kit

High performance inline ventilation kit

Applications and Installation:

- Suitable for domestic multi-room applications including:
 - Bathroom exhaust
 - Laundry exhaust
 - General kitchen ventilation systems
- Can be installed by a home handyman or industry professional (electrician or air conditioning installer)



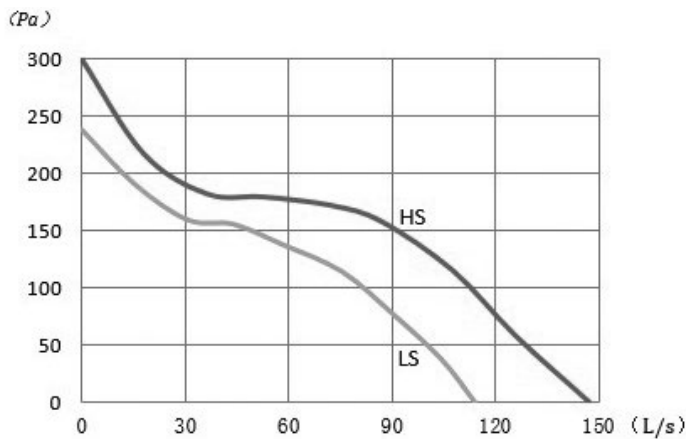
Intake grille not included in kit and shown for schematic purposes only. Expella's ventilation kits allow for choice of intake grille (sold separately).

Fan Specifications:

Model	Item code	Duct Size (mm)	Volts	W	m3/hr	L/s	Pa (max)	dB(A) *	Protection
EMF150	1EMF150	150	240	50 43	530 410	147 114	300 240	33 29	IP44

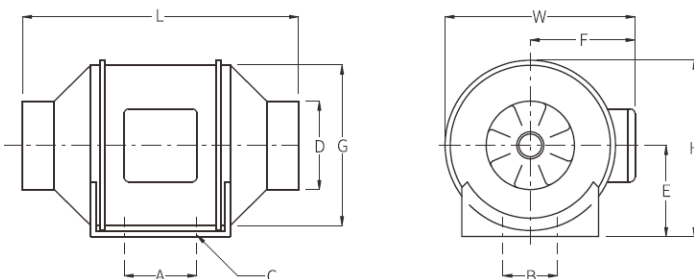
*Measured at 3 metres

Fan Performance:



Fan Dimensions:

Model	A	B	C	ØD	E	F	G	L	W	H
EMF 150	80	60	4	147	109	127	187	313	227	208



expella™